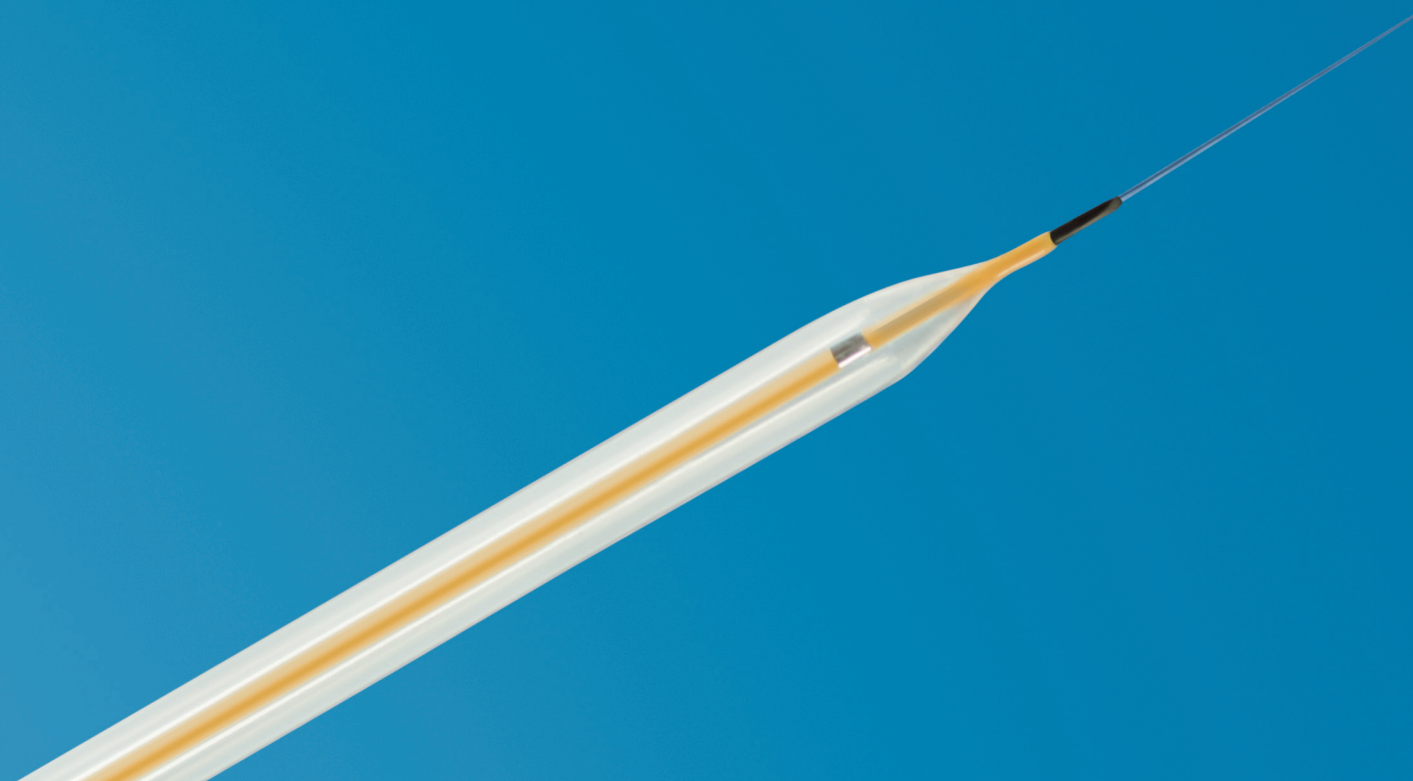
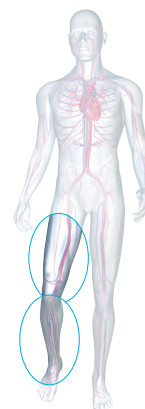


# Passeo-14

PTA Balloon/0.014"/OTW

Indicated for lower limb arteries



- Up to 73 % faster deflation times<sup>1</sup>
- The only forefront solution offering dedicated pedal sizes
- Enhanced crossability
- High pushability and flexibility

<sup>1</sup> vs. Amphirion Deep

# Passeo-14

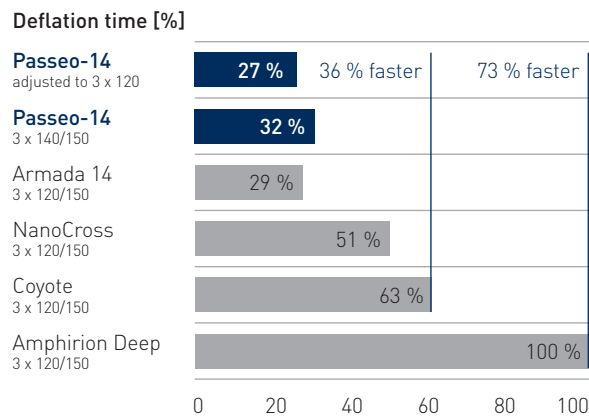
## Championing the challenge

Up to 73 % faster deflation time<sup>2</sup> due to state of the art catheter shaft design that creates a large balloon lumen facilitating rapid inflation and deflation. A faster approach to treat long lesions.

“Impressive deflation time!”  
(Dr. M. A. De Gregorio Ariza, Saragossa, Spain, during initial product testing)

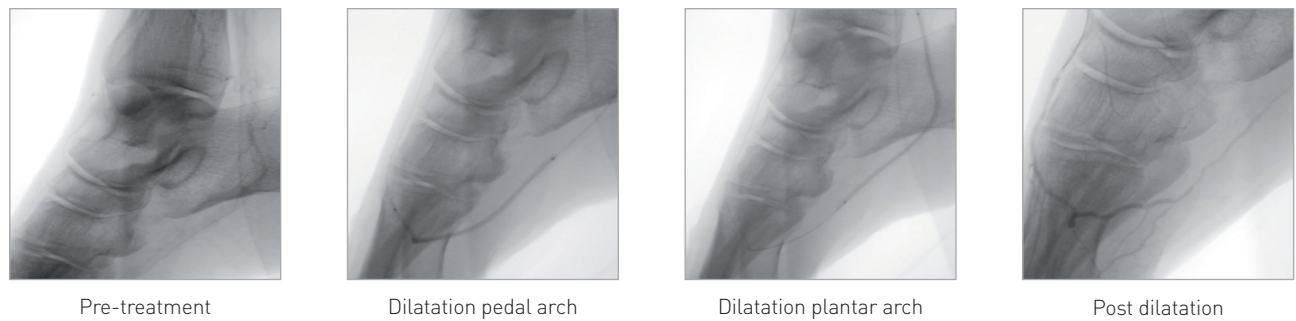
### Fast deflation times

- Passeo-14<sup>3</sup> deflates:
- 73 % faster than Amphirion Deep
  - 36 % faster than Coyote
  - 24 % faster than NanoCross



Delivering you the only forefront dedicated pedal design of:

- ø 1.5 - 2.0 mm, with
- 150 mm flexible distal shaft and
- tailored stiffening wire



Courtesy of Dr. L. Steffanon, Vicenza, Italy

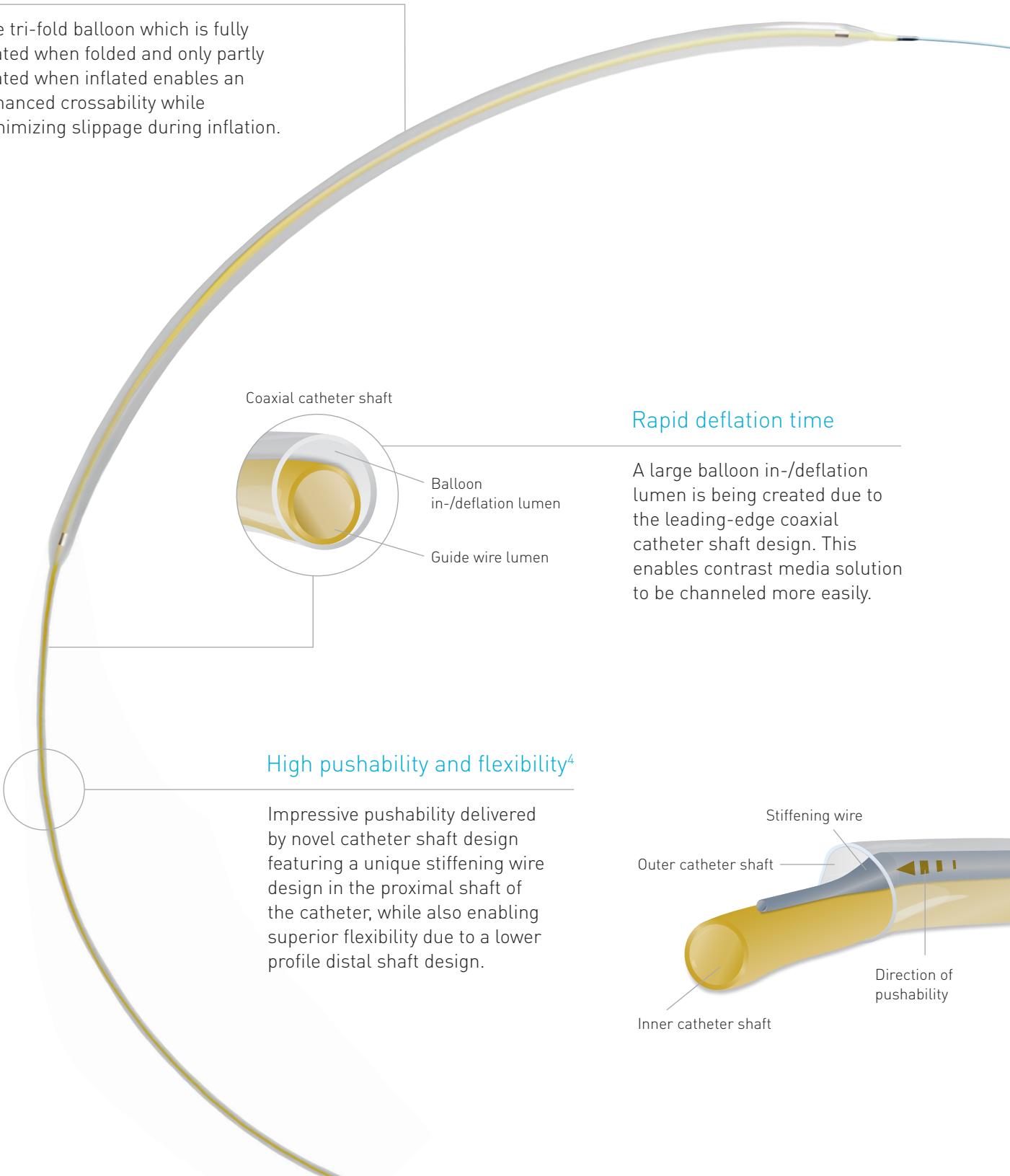
<sup>2,4</sup> BIOTRONIK data on file (IIB report 65/2012)

<sup>3</sup> Volume correction: the volume of a 3 x 120 mm balloon is 15 % less than the volume of the 3 x 140 mm balloon which can be directly correlated to the deflation time. Therefore the measured deflation time of 32 % can be reduced by 15 % which results in a volume corrected deflation time of 27 %.

# A superb PTA Balloon to treat most complex lower limb lesions

### Enhanced crossability

The tri-fold balloon which is fully coated when folded and only partly coated when inflated enables an enhanced crossability while minimizing slippage during inflation.

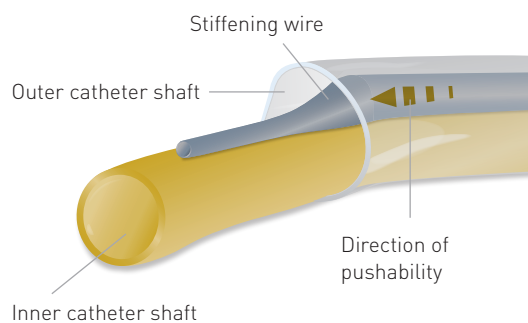


### Rapid deflation time

A large balloon in-/deflation lumen is being created due to the leading-edge coaxial catheter shaft design. This enables contrast media solution to be channeled more easily.

### High pushability and flexibility<sup>4</sup>

Impressive pushability delivered by novel catheter shaft design featuring a unique stiffening wire design in the proximal shaft of the catheter, while also enabling superior flexibility due to a lower profile distal shaft design.



# Passeo-14

## PTA Balloon/0.014"/OTW

### Technical Data

Balloon catheter	
Catheter type	OTW
Recommended guide wire	0.014"
Tip	Optimized entry profile and colored
Balloon material	SCP (Semi-Crystalline Polymer), controlled compliance (4 - 6 %)
Balloon folding	3-fold
Balloon coating	Hydrophilic patchwork coating
Balloon markers	2 swaged markers (zero profile)
Sizes	ø 1.5 - 4.0 mm; L: 20 - 220 mm
Distal shaft	3.1F, hydrophilic coating, coaxial design; 150 mm length (ø 1.5/2.0 x 20 - 100 mm); 75 mm length (ø 2.0 x 140 - 220 mm and ø 2.5 - 4.0 mm)
Proximal shaft	3.9F, hydrophobic coating, coaxial design; stiffening wire
Usable length	150 cm (ø 1.5 - 4.0 mm); 120 cm (ø 1.5 - 2.0 mm); 90 cm (ø 2.5 - 4.0 mm)

### Compliance Chart

		Balloon diameter x length (mm)					
		ø 1.5 x 20-70	ø 2.0 x 40-220	ø 2.5 x 40-220	ø 3.0 x 40-220	ø 3.5 x 40-140	ø 4.0 x 40-140
Nominal Pressure (NP)	atm*	7	7	7	7	7	7
	ø (mm)	1.5	2.0	2.5	3.0	3.5	4.0
Rated Burst Pressure (RBP)	atm*	14	14	14	14	14	14
	ø (mm)	1.57	2.08	2.61	3.18	3.63	4.16

\* 1 atm = 1.013 bar

### Ordering Information

	Catheter Length (cm)	Balloon ø (mm)	Balloon Length (mm)						
			20	40	70	100	140	180	220
			380271 <sup>5</sup>	380277	380283	-	-	-	-
Antegrade approach	120	1.5	-	380278	380284	380290	380296	380302	380308
	120	2.0	-	380279	380285	380291	380297	380303	380309
	90	2.5	-	380280	380286	380292	380298	380304	380310
	90	3.0	-	380281 <sup>5</sup>	380287 <sup>5</sup>	380293 <sup>5</sup>	380299 <sup>5</sup>	-	-
	90	3.5	-	380282	380288	380294	380300	-	-
	90	4.0	-	-	-	-	-	-	-

	Catheter Length (cm)	Balloon ø (mm)	Balloon Length (mm)						
			20	40	70	100	140	180	220
			380313 <sup>5</sup>	380319	380325	-	-	-	-
Crossover approach	150	1.5	-	380320	380326	380332	380338	380344	380350
	150	2.0	-	380321	380327	380333	380339	380345	380351
	150	2.5	-	380322	380328	380334	380340	380346	380352
	150	3.0	-	380323 <sup>5</sup>	380329 <sup>5</sup>	380335 <sup>5</sup>	380341 <sup>5</sup>	-	-
	150	3.5	-	380324	380330	380336	380342	-	-
	150	4.0	-	-	-	-	-	-	-

<sup>5</sup> 8 weeks pre-order only

Passeo-14 is part of the BIOTRONIK **4F** Solutions portfolio, including:

- Introducer Sheath: **Fortress** ■ Guide Wires: **Cruiser, Cruiser-18** ■ Balloons: **Passeo-18**
- Stents: **PRO-Kinetic Energy Explorer, Pulsar-18**

For ordering please contact your  
local sales representative

BIOTRONIK AG  
Ackerstrasse 6  
8180 Bülach · Switzerland  
Tel +41 (0)44 8645111  
Fax +41 (0)44 8645005  
info.vi@biotronic.com  
www.biotronic.com

© BIOTRONIK AG – All rights reserved.  
Specifications are subject to modification, revision and improvement.

**BIOTRONIK**  
excellence for life