

# Pantera Lux

## Paclitaxel-Releasing Balloon

Indicated for in-stent restenosis, de novo lesions, small vessels and acute occlusions<sup>1</sup>



- Clinically proven solution in both in-stent restenotic and de novo lesions<sup>2,3</sup>
- Advanced trackability to smoothly reach the lesion site
- Highly biocompatible BTHC excipient for safe results

<sup>1</sup> Indications may differ in countries not accepting CE mark

<sup>2</sup> Hehrlein C et al. Cardiovasc Revasc Med. 2012 Sep; 13(5): 260-4.

<sup>3</sup> Toelg R et al. EuroIntervention 2014 Sep; 10(5): 591-9.

# Pantera Lux

## Excellent deliverability

Expand your universe of treatment options with this clinically proven solution. Using the highly biocompatible BTHC excipient, Pantera Lux effectively delivers a proven antiproliferative drug to the lesion site – without leaving an implant behind.

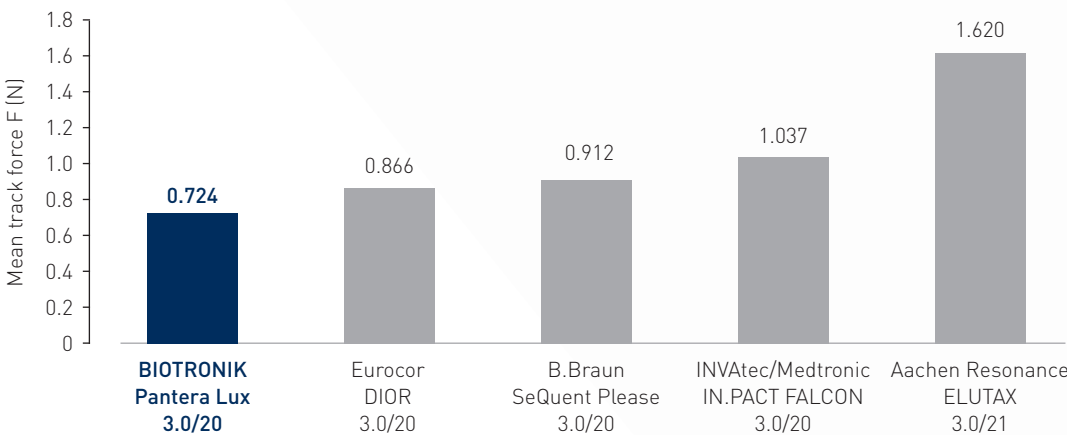
### Clinically proven solution in both in-stent restenotic and de novo lesions

Clinical outcomes from both the PEPPER and DELUX clinical studies with more than 1'000 patients show high efficacy and safety for Pantera Lux in both in-stent restenotic and de novo lesions.

### Advanced trackability to smoothly reach the lesion site

Pantera Lux is based on the Pantera semi-compliant balloon and provides advanced trackability to successfully reach and treat most cases in daily practice.

Reduced track force compared to main competitors (distal part of coronary vessel model)<sup>4</sup>



<sup>4</sup> BIOTRONIK data on file.

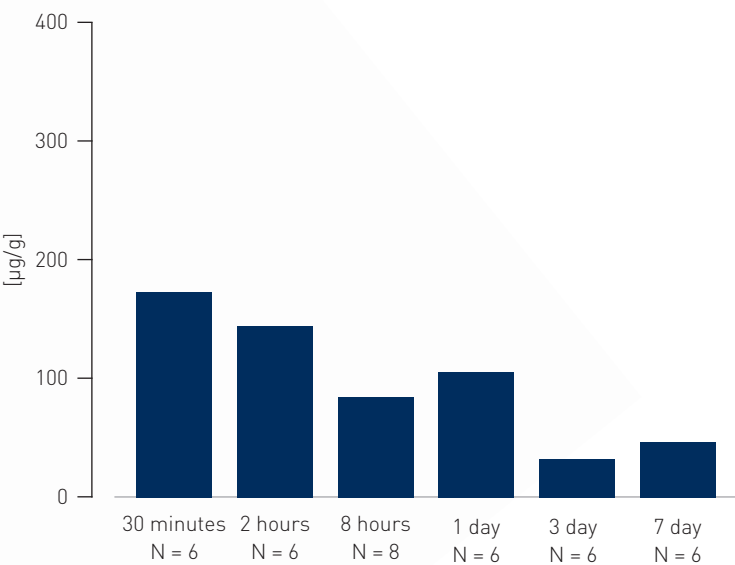
## Controlled drug release

### Highly biocompatible BTHC excipient for safe results

**Lux coating technology**  
Pantera Lux coating technology blends paclitaxel with BTHC, a rapidly metabolized, safe and biocompatible excipient<sup>5</sup>, thus improving bioavailability. Homogeneous balloon coating ensures proper treatment of drug to the entire region touched by the balloon inflation, minimizing geographic miss.

**Tissue retention**  
Following one application of the Pantera Lux, paclitaxel can be readily detected in the treated region beyond 7 days in animal tissue.

Pig coronary artery paclitaxel tissue concentrations<sup>6</sup>



<sup>5</sup> Joner et al. Thrombosis and Haemostasis. 2011 May; 105(5): 864-72.  
<sup>6</sup> Table adapted from Radke P et al. EuroIntervention. 2011 Oct; 7(6): 730-7.

# Pantera Lux

## Paclitaxel-Releasing Balloon

Technical Data	Drug-releasing balloon	
	Catheter type	Fast-exchange PTCA balloon catheter
	Recommended guide catheter	5F (min. I.D. 0.056")
	Lesion entry profile	0.017"
	Guide wire diameter	0.014"
	Usable catheter length	140 cm
	Balloon folding	3-fold
	Balloon markers	Two embedded platinum-iridium markers
	Brachial shaft marker	92 cm from tip
	Femoral shaft marker	102 cm from tip
	Proximal shaft diameter	2.0F
	Distal shaft diameter	2.5F (ø 2.0 - 3.5 mm), 2.6F (ø 4.0 mm)
	Nominal Pressure (NP)	7 atm
	Rated Burst Pressure (RBP)	13 atm (ø 2.0 - 3.5 mm); 12 atm (ø 4.0 mm)
	Coating	
	Drug	Paclitaxel
	Drug dose	3.0 µg/mm <sup>2</sup>
	Delivery matrix	Paclitaxel and butyryl-tri-hexyl citrate (BTHC)
	Coated area	Cylindrical section of the balloon, exceeding the proximal and distal markers

Compliance Chart		Balloon diameter x length (mm)				
		ø 2.0 x 10-30	ø 2.5 x 10-30	ø 3.0 x 10-30	ø 3.5 x 10-30	ø 4.0 x 10-30
Nominal Pressure (NP)	atm*	7	7	7	7	7
	ø (mm)	2.00	2.50	3.00	3.50	4.00
Rated Burst Pressure (RBP)	atm*	13	13	13	13	12
	ø (mm)	2.26	2.82	3.48	4.11	4.59

\* 1 atm = 1.013 bar

Ordering Information	Balloon ø (mm)	Catheter length 140 cm Balloon length (mm)				
		10	15	20	25	30
	2.0	365110	365111	365112	365113	365114
	2.5	365120	365121	365122	365123	365124
	3.0	365125	365126	365127	365128	365129
	3.5	365130	365131	365132	365133	365134
	4.0	365135	365136	365137	365138	365139

Pantera Lux is part of the BIOTRONIK coronary solutions portfolio, including:

- Stents: Orsiro, PRO-Kinetic Energy, PK Papyrus
- Balloons: Pantera, Pantera Pro, Pantera LE0
- Guide Wires: Galeo Pro, Cruiser, Magnum

For ordering please contact your  
local sales representative

BIOTRONIK AG  
Ackerstrasse 6  
8180 Bülach · Switzerland  
Tel +41 (0)44 8645111  
Fax +41 (0)44 8645005  
info.vi@biotronic.com  
www.biotronic.com